

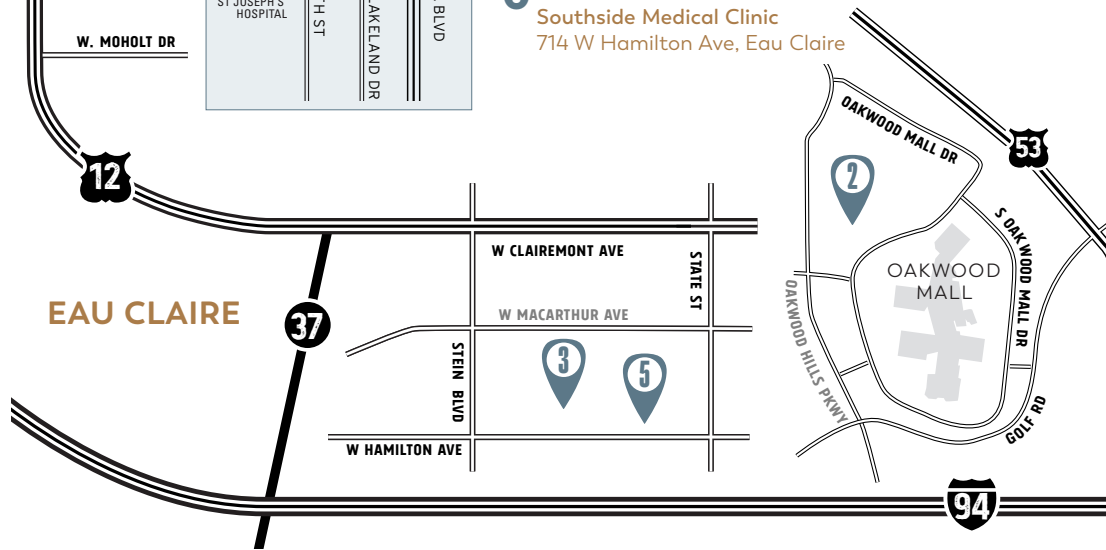
# OakLeaf Direct

Close to Home. Care You Can Trust.

OakLeaf Direct offers a variety of locations in both Eau Claire and Chippewa Falls to meet your needs.

- 1 OakLeaf Clinics - Chippewa Falls  
855 Lakeland Dr, Chippewa Falls
- 2 OakLeaf Clinics-  
Eau Claire Medical Clinic  
3802 W Oakwood Mall Dr, Eau Claire
- 3 OakLeaf Clinics - OakLeaf Pediatrics  
3213 Stein Blvd, Eau Claire
- 4 OakLeaf Clinics -  
Pine Grove Family Medicine - West Office  
2741 N Clairemont Ave, Eau Claire
- 5 OakLeaf Clinics -  
Southside Medical Clinic  
714 W Hamilton Ave, Eau Claire

## CHIPPEWA FALLS



Find your path to better primary care today –  
**partner with OakLeaf Direct!**

715.552.9797



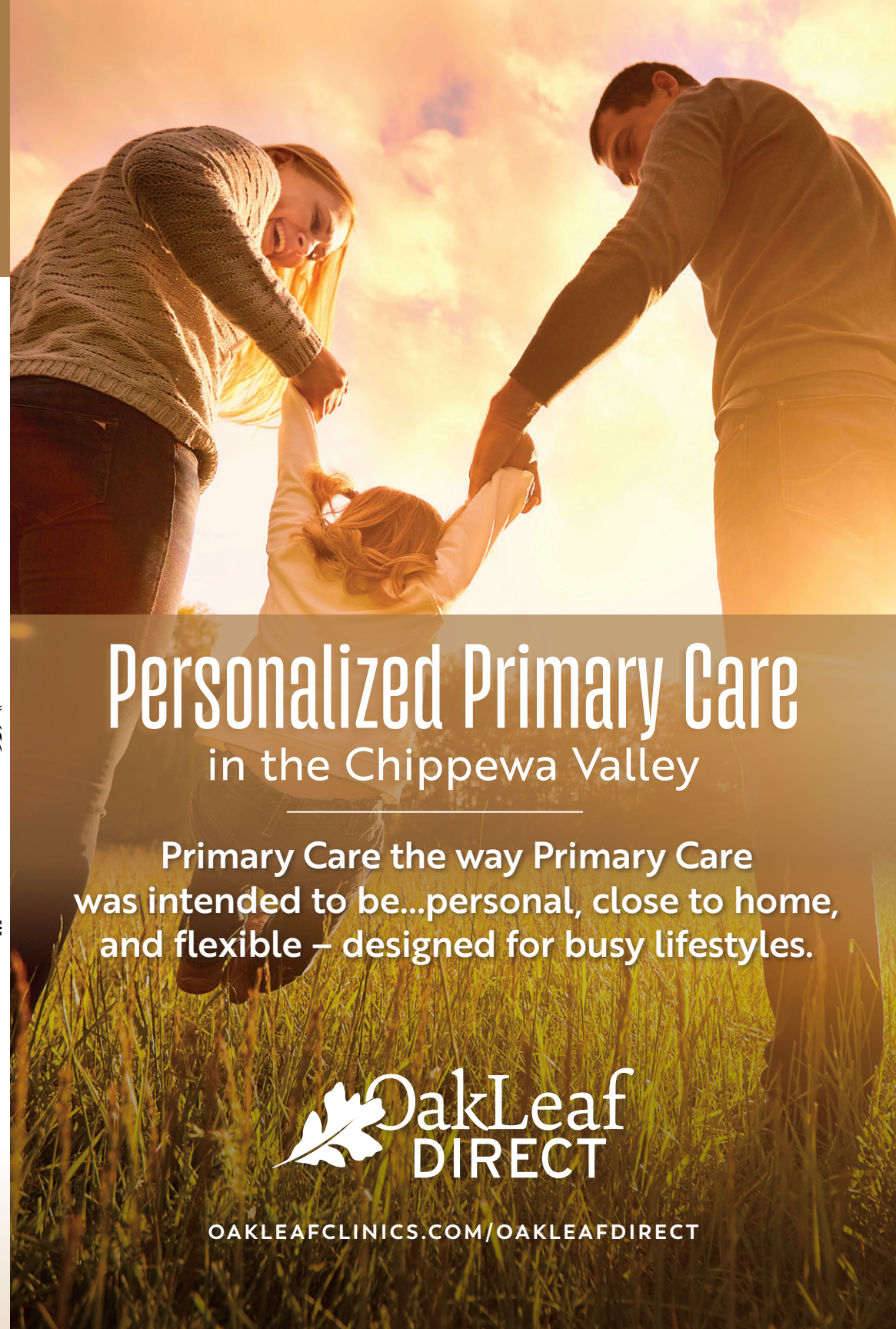
A High Value Primary Care  
Partnership

## Personalized Primary Care in the Chippewa Valley

Primary Care the way Primary Care  
was intended to be...personal, close to home,  
and flexible – designed for busy lifestyles.



[OAKLEAFCLINICS.COM/OAKLEAFDIRECT](http://OAKLEAFCLINICS.COM/OAKLEAFDIRECT)





# Welcome to OakLeaf Direct

## A Personalized Primary Care Experience

At OakLeaf Direct, we understand how busy life is and our goal is to partner with employees for better health and wellness.

When we can partner to improve individual health—employers and employees benefit in the cost savings and improved outcomes. Choosing an OakLeaf Direct provider is equivalent to choosing a partnership – an advocate, a coordinator, a coach, and most importantly – your personal healthcare advisor.



### trust

OakLeaf physicians have a reputation for providing excellent care and have practiced in the Chippewa Valley for over 25 years. As independent physicians, we believe in relationships with patients – getting to know each one of them personally and helping them navigate the complexities of the health system.

“Direct primary care models are the future of medicine, where high quality care is provided at a lower cost. I am excited to be involved in innovative medical care!”

- KYLE DETTBARN, MD



### access

Getting the right care at the right time in the right place is important. OakLeaf Direct offers telephone, virtual visits, and same day urgent care appointments based on your unique circumstances. Seeing you at the right time in the right place will reduce emergency room visits and unnecessary specialist referrals. Access also means we take the time to take care of your personalized needs.

## Services Include

- ✓ Preventive Care & Routine Screenings
- ✓ Acute Illness & Sick Care
- ✓ Chronic Care Prevention & Management
- ✓ Medication Management
- ✓ Assistance with Employee Wellness Goals
- ✓ Healthy Lifestyle and Risk Reduction Coaching
- ✓ In Clinic Blood Draws and Specimen Collection
- ✓ Routine Lab Tests
- ✓ In Clinic Tests and Procedures including EKG, Suture Removal and Basic Wound Care.



### local independent providers

OakLeaf Direct physicians choose to practice independently and are not accountable for downstream health care system revenue, keeping us focused on improving wellness, preventing and managing diseases, and lowering costs.



### transparency

OakLeaf Direct is not insurance – it is a partnership. When you partner with OakLeaf Direct you will have no deductible or copay. OakLeaf Direct pricing is 100% transparent.

“Bethany Stevens is what a medical professional should be! My experience with Bethany has been incredible! She is so kind and thoughtful. Her thoroughness is so refreshing. She only wants what is best for me. Thank you, Bethany!”

- LISA - AN OAKLEAF DIRECT PATIENT